

Annexin V Apoptosis detection Kit

Fluorochrome	Reference	Size
FITC	ANXVKF-100T	100 test
FITC	ANXVKF7-100T	100 test
PE	ANXVKPE-100T	100 test
Dy634	ANXVKDY-100T	100 test
Biotin	ANXVKB-100T	100 test
CF-Blue	ANXVKCFB-100T	100 test
CF-Blue	ANXVKCFB7-100T	100 test

PRODUCT DESCRIPTION

Tested application: flow cytometry

Species reactivity: All mammalian

Storage buffer: aqueous buffered solution containing protein stabilizer and 0.09% sodium azide (NaN₃).

Recommended usage: Immunostep's Annexin V, is intended for the identification and enumeration of apoptotic cells. This reagent is effective for direct immunofluorescence staining for flow cytometric analysis using $\leq 1 \times 10^5$ cells in 100 μ l volume of Annexin V Binding Buffer.

Presentation: liquid

Reagent provided: 100 test (5 μ l/test)

Reference	Excitation laser Line (nm)	Max. Excitation peak (nm)	Max. Emission peak (nm)	Recommended Band Pass Filter (nm)
ANXVF-200T	488 Blue Laser	495	519	530/30
ANXVPE-200T	488,532,561 Blue Laser	496/564	578	585/42
ANXVDY-200T	595,633,635, 640,647 Red Laser	635	658	660/20
ANXVCFB-200T	405 Violet Laser	405	450	450/50
7-AAD	488,532,561 Blue Laser	546	647	660/20
PI	488,532,561 Blue Laser	351	617	585/42

ANTIGEN DETAILS

Large description: Apoptosis is characterized by a variety of morphological features. One of the earliest indications of apoptosis is the translocation of the membrane phospholipid phosphatidylserine (PS) from the inner to the outer leaflet of the plasma membrane. Once exposed to the extracellular environment, binding sites on PS become available for Annexin V, Ca²⁺-dependent, phospholipid binding protein with a high affinity for PS. The translocation of PS precedes other apoptotic processes such as loss of plasma membrane integrity, DNA fragmentation, and chromatin condensation. As such, Annexin V can be conjugated to biotin or to a fluorochrome, and used for the easy, flow cytometric identification of cells in the early stages of apoptosis.⁽¹⁻⁷⁾

Other Names: Annexin A5

Gene ID: 308

Molecular weight: 35,9 kDa

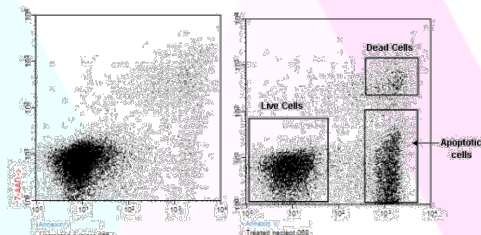


Figure 1. Jurkat cells (T-cell leukemia, human) treated with 6 μ M camptothecin for four hours (right panel) or untreated (left panel).

Please, refer to www.immunostep.com technical support for more information.

WARRANTY

Warranted only to conform to the quantity and contents stated on the label or in the product labelling at the time of delivery to the customer. Immunostep disclaims hereby other warranties. Immunostep's sole liability is limited to either the replacement of the products or refund of the purchase price.

REFERENCES

- Fadok VA, Voelker DR, Campbell PA, Cohen JJ, Bratton DL, Henson PM. Exposure of phosphatidylserine on the surface of apoptotic lymphocytes triggers specific recognition and removal by macrophages. *J Immunol*1992 Apr 1;148(7):2207-16.
- Koopman G, Reutelingsperger CP, Kuijten GA, Keehnen RM, Pals ST, van Oers MH. Annexin V for flow cytometric detection of phosphatidylserine expression on B cells undergoing apoptosis. *Blood*1994 Sep 1;84(5):1415-20.
- Homburg CH, de Haas M, von dem Borne AE, Verhoeven AJ, Reutelingsperger CP, Roos D. Human neutrophils lose their surface Fc gamma RIII and acquire Annexin V binding sites during apoptosis in vitro. *Blood*1995 Jan 15;85(2):532-40.
- Vermes I, Haanen C, Steffens-Nakken H, Reutelingsperger C. A novel assay for apoptosis. Flow cytometric detection of phosphatidylserine expression on early apoptotic cells using fluorescein labelled Annexin V. *J Immunol Methods*1995 Jul 17;184(1):39-51.
- Darzynkiewicz Z, Bedner E, Traganos F. Difficulties and pitfalls in analysis of apoptosis. *Methods Cell Biol*2001;63:527-46.
- Perez-Andres M, Benito JJ, Rodriguez-Fernandez E, Corradetti B, Primo D, Manzano JL, et al. Bisursodeoxycholate(ethylenediamine)platinum(II): a new autofluorescent compound. Cytotoxic activity and cell cycle analysis in ovarian and hematological cell lines. *Dalton Trans*2008 Nov 28(44):6159-64.
- Herrero-Martin D, Osuna D, Ordonez JL, Sevillano V, Martins AS, Mackintosh C, et al. Stable interference of EWS-FLI1 in an Ewing sarcoma cell line impairs IGF-1/IGF-1R signalling and reveals TOPK as a new target. *Br J Cancer*2009 Jul 7;101(1):80-90.

MANUFACTURED BY



Immunostep S.L
Avda. Universidad de Coimbra, s/n
Cancer Research Center (CIC)
Campus Miguel de Unamuno
37007 Salamanca (Spain)
Tel. (+34) 923 294 827
www.immunostep.com